

LMU

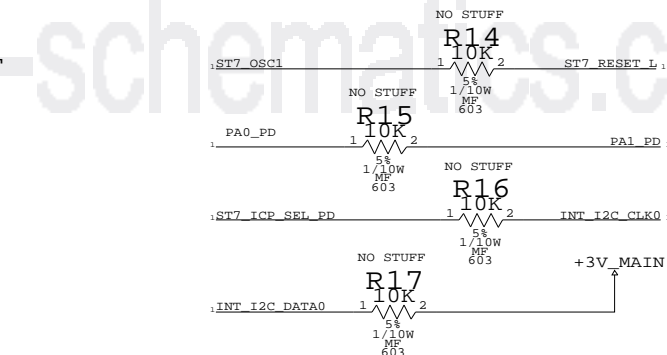
BOARD CONNECTOR

12/17/04 SCHEMATIC RELEASE FOR PRODUCTION

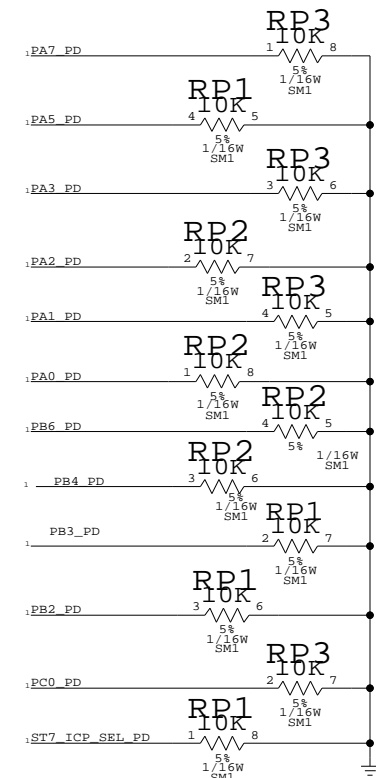


FORMAT FOR NUMBER	BOM OPTION	REF DES	COMMENTS:
S0504		U2	ALT. FOR MAX4236

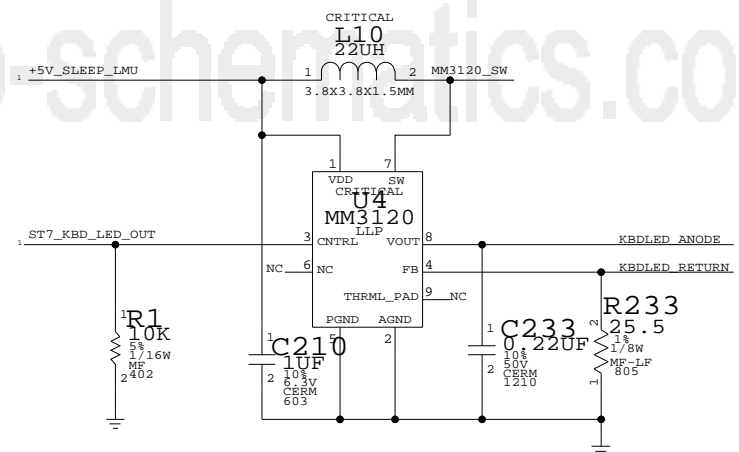
The circuit diagram shows a photodiode amplifier. The photodiode PD1 (BS520) is connected in reverse bias to a 5.1M resistor R3. The signal path goes through a 1K resistor R4 to the inverting input of an op-amp U2 (MAX4236). The non-inverting input is grounded. The feedback path consists of a 1K resistor R6 and a 0.22uF capacitor C5 in parallel. The output of the op-amp is connected to a 1K resistor R8 and a 0.1uF capacitor C6. A gain setting switch Q1 (2N7002) is connected to the output through a 15K resistor R5. The circuit is powered by a +3V MAIN supply.



LMU PULL-DOWNS



Keyboard LED Driver



<p>NOTICE OF PROPRIETARY PROPERTY</p> <p>THE INFORMATION CONTAINED HEREIN IS THE PROPRIETARY PROPERTY OF APPLE COMPUTER, INC. THE POSSESSOR AGREES TO THE FOLLOWING</p> <p>I TO MAINTAIN THE DOCUMENT IN CONFIDENCE</p> <p>II NOT TO REPRODUCE OR COPY IT</p> <p>III NOT TO REVEAL OR PUBLISH IN WHOLE OR PART</p>
--



APPLE COMPUTER INC.

SIZE D	DRAWING NUMBER 051-6702	REV. A
SCALE NONE	SHT 1	OF 1